

SPECIFICATION:

Feature:

- Main switches are available in 3 & 4 pole, auxiliary contacts can be used for additional pole.
- Handle type: Standard knob or knob with door clutch, padlock device type

Rating:

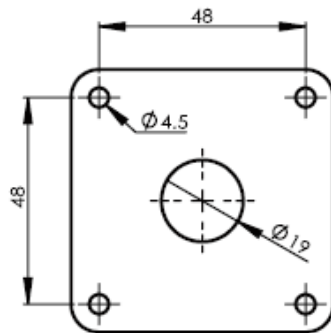
style 型號 voltage 電壓		DS16 DS416	DS25 DS425	DS32 DS432	DS40 DS440	DS63 DS463	DS80 DS480
AC3 (KW)	220V ~ 240V	2.2	4.0	5.5	7.5	11.0	15.0
	380V ~ 440V	3.7	5.5	7.5	11.0	18.5	22.0
	660V ~ 690V	3.7	5.5	7.5	15.0	22.0	30.0
AC23 (KW)	220V ~ 240V	3.0	5.5	5.5	7.5	11.0	18.5
	380V ~ 440V	5.5	7.5	11.5	15.0	22.0	30.0
	660V ~ 690V	5.5	7.5	11.5	18.5	30.0	37.0
AC21		16A	25A	32A	40A	63A	80A

style 型號 voltage 電壓		DS16 DS416	DS25 DS425	DS32 DS432	DS40 DS440	DS63 DS463	DS80 DS480
AC-3 (HP)	110V ~ 120V	1	1.5	2	3	5	7.5
	220V ~ 240V	2	3	5	7.5	10	20
	380V ~ 440V	3	5	10	15	20	40
	500V ~ 600V	3	5	10	15	20	50

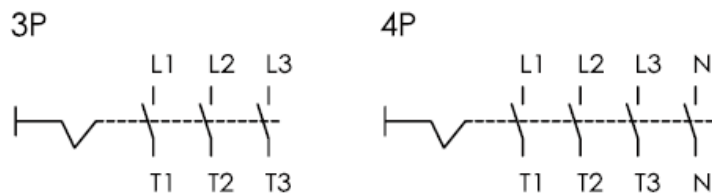
Mounting dimensions:

Panel mounting

面板固定孔



Connecting diagram:



Auxiliary contact: 16A, 25A, 32A

Assembly diagram:

■ 固定式組立圖 Panel Mounting 面板固定式

